



GETTING STARTED GUIDE



INSTALLATION



CONFIGURATION



SUPPORT

Version 4.x



pg.3	Alike Overview
pg.8	Alike Installation
pg.13	Alike Configuration
pg.20	Create Your First Job
pg.21	ABD Overview
pg.22	Alike Admin Console Navigation

version 4

ALIKE v4.x FEATURES AND OVERVIEW



Intuitive Web-Based User Interface

Alike v4.x features an intuitive, sleek, web-based management console which provides increased simplicity, speed, and visibility to your backup and disaster recovery needs.

- Web-Based, Mobile-Friendly Accessibility
Access and manage your jobs in Alike from any computer or mobile device with Internet access.
- Drag and Drop Job Creation
Simple drag and drop operation expedites the setup of new backup, replication, and restoration jobs.
- Extensive Performance Insight
Informative graphs and status indicators show you the big picture of Alike's performance. You can also obtain details about individual hosts, VMs, and physical systems through multiple interface views and reporting options.
- Faster, Easier Management
Intuitive host and VM-level menu options make managing them simpler and quicker than ever before.
- Active Troubleshooting
Alike assists with troubleshooting issues by automatically linking relative articles from our online knowledge base and a bottleneck feature that displays any bottleneck issues.



Vault to the Sky

With a connection to Amazon S3, you can send backups to and restore from the cloud. Simply enter your S3 credentials into Alike, and Alike's unrivaled deduplication will ensure the data you store in the cloud takes up the least amount of storage space possible.



Changed Block Tracking for XenServer and Hyper-V

Alike (v4.5 and up) supports Changed Block Tracking (CBT) on Citrix XenServer 6.5 and above, as well as Hyper-V 2008 and above. This option can significantly improve job performance, and reduce the amount of I/O required to process them, thereby significantly decreasing Enhanced backup and replication jobs in either platform.

SYSTEM REQUIREMENTS



System Running Alike

- Windows XP SP2, Vista, 7, 8, 8.1, 10
- Windows 2008 - 2016
- 2GB Ram
- 1GB disk space

Please note: Windows XP/2003 are no longer supported by Microsoft, and not recommended for use.



System Recommendations

- Server OS, 2008 or above
- 2GB RAM
- 5GB+ Disk Space



Supported Browsers

- Chrome
- Firefox
- Safari
- Opera



Backup Storage Requirements

- Any CIFS compliant storage (or local storage on the Alike server)
- Sufficient free storage for your deduplicated backup data



Alike Protects

- Citrix XenServer 5.5 - 7
- XCP 1.0, 1.1, 1.6
- Microsoft Hyper-V (2008 - 2016)
- Windows-based physical machines running XP - 2012 R2, 10

BEFORE YOU INSTALL



Have your license key ready.

An email containing your license key was sent to the registration email address. The assigned key is available in your Quadric Software account, as well. You will be asked to enter your license key during the software installation.



Choose where to install Alike.

Alike must be installed on a machine running Windows. We recommend a minimum of 2 GBs of space depending on how much backup activity you perform (large systems will need more). This is disk space is for the application only.

Your backup storage location is set later during the initial configuration.



Gather service account credentials.

A privileged user account is required for the Alike service to run. Please have your username and password ready.

2 WAYS TO PROTECT

Alike offers users two powerful methods of data protection: Q-Hybrid and Enhanced.

- Users with Windows-based virtual machines may opt to use Alike's **Q-Hybrid** method; a dynamic, high-performance, agent-based approach which works exclusively from within the guests. This method allows Alike to protect using full VSS (quiesced) snapshots on any platform.

For users of Alike Physical, all jobs run using Q-Hybrid.

- Alike's **Enhanced** approach protects any guest operating system, on any platform. It's an agentless solution which works exclusively at the hypervisor level - outside of the VMs. It generates and leverages hypervisor-level snapshots while protecting everything on the hypervisor itself. CBT is also available for XenServer 6.5 and up, and Hyper-V 2008 and up in Alike v4.5 and up.

WHAT'S AN ADS?



The ADS (Alike Data Store) is simply a CIFS share that contains all of the Alike backup data. During operation, both the Alike services and the systems being protected access the contents of the ADS. It may live locally on the Alike Server itself, or remotely on a NAS or other storage device.

Ensure your ADS is sized properly for your backup data and performance requirements.

Please keep the following in mind while setting up your ADS:

- It must be accessible by a network share (CIFS).
- If storage local to the Alike server is chosen, Alike will automatically attempt to create a network share of your backups.

WHAT'S AN ABD?

(XenServer Only)



An ABD (Alike Backup Delegate) is a tiny, self-managed virtual machine that assists Alike during Enhanced backup and restore jobs. When jobs complete, Alike safely disposes of the ABDs -- eliminating CPU or memory consumption when not in use.

If you add XenServer hosts during setup, Alike automatically deploys and creates the ABD templates for you.

Configuration & Performance Tips:



- [✓] The Alike Server must be able to route to your XenServer/Hyper-V hosts. Your hosts, ABDs, and guests also need to route back to your ADS.



- [✓] Select a CIFS share for your ADS (Alike Data Store) that is reliable and capable of scaling to meet your needs.



- [✓] Ensure the machine running Alike has quality, reliable storage as well. Alike's services utilize its server's resources as efficiently as possible. Higher performance local disks improve Alike's performance.



- [✓] First-time backups take longer to complete. For larger data sets, consider running them manually before using Alike's auto-schedule options.

Did You Know?

Every 30-day trial of Alike DR also includes 30 days of full access to our expert Support team.

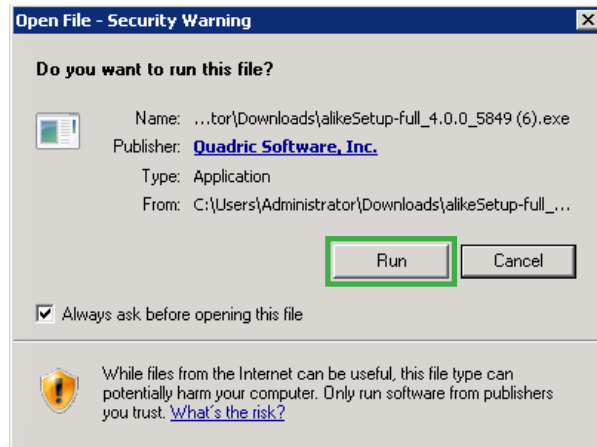
If you need assistance with your setup of Alike, let us know:

support@quadricsoftware.com

Alike Installation

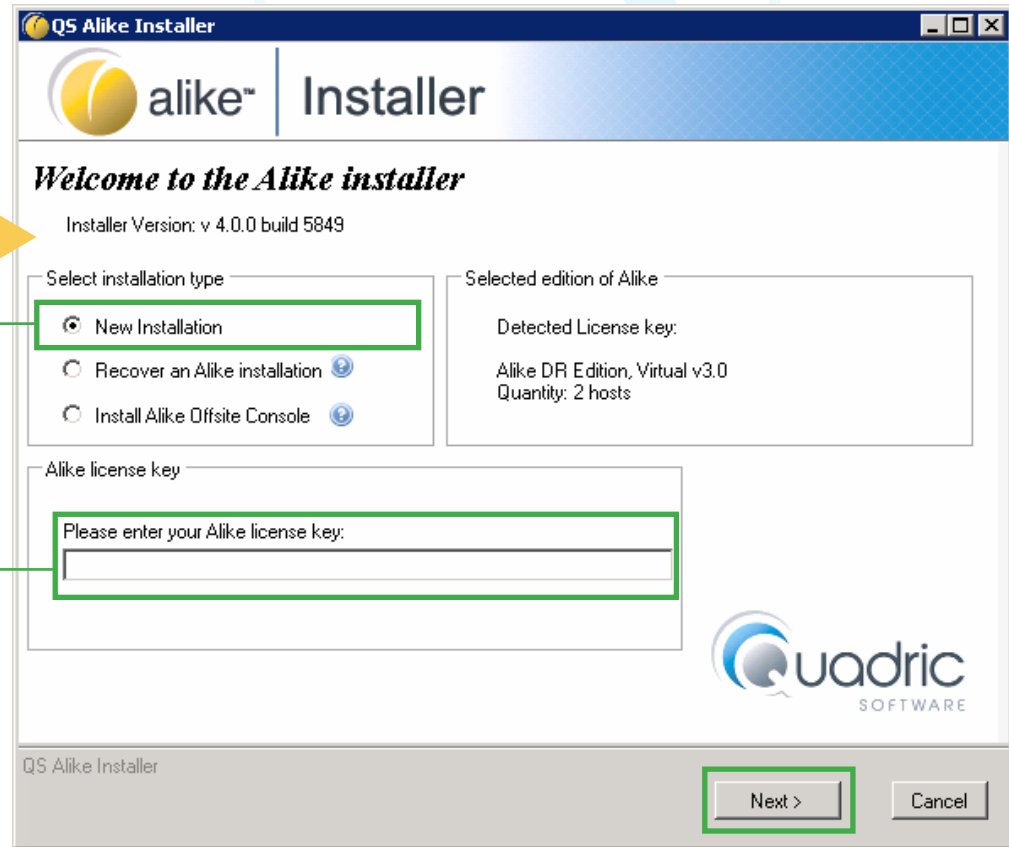
 Installing Alike is simple and quick.
Follow the steps below:

1) Download and launch the Alike Installer then click Run.



2) Choose New Installation.

3) Input your license key, then click Next to proceed.

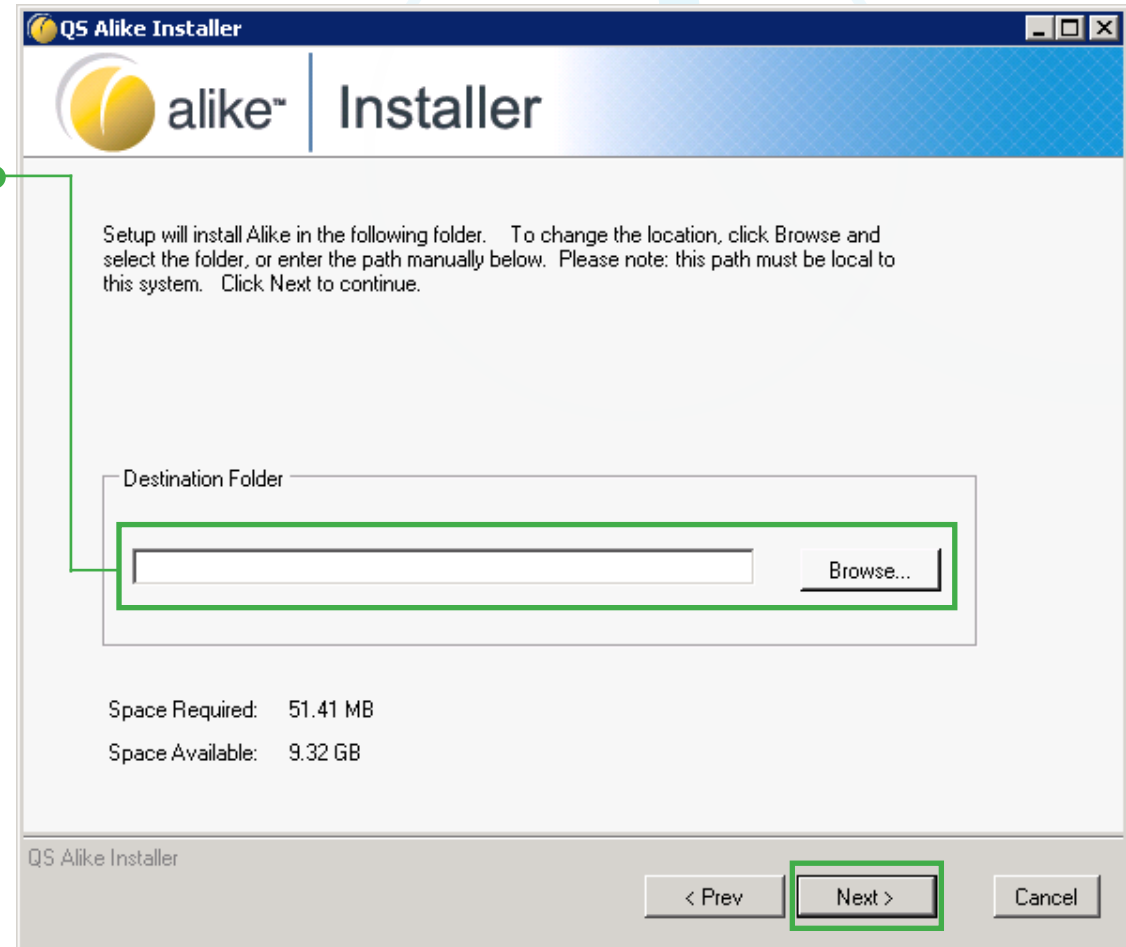


Review the release notes on the following page.
Then review/accept the End User License Agreement.

- 4) Browse or input the desired location for the Alike software.

This destination is not for backup storage, and must be local to this system.

- 5) Click Next to proceed.



Proceed to input your Service Account credentials.

Alike Installation (continued)

- 6) Input your Service Account credentials.
- 7) Click Test to authenticate your credentials.

The service account runs the main Alike services, please ensure your credentials have sufficient authority.

- 8) Once validated, click Next to continue.

QS Alike Installer

alike™ Installer

Define Service Account

Username
Password

The Alike services are required to run under a service account to function correctly. Please provide your service account information here.

Define Service Account

Username
.\Administrator

Password
xxxxxxxx

Authentication Successful!

Note: If the above credentials are incorrect, the Alike Services will not be able to start. Please test that the credentials are valid!

QS Alike Installer

< Prev Next > Cancel

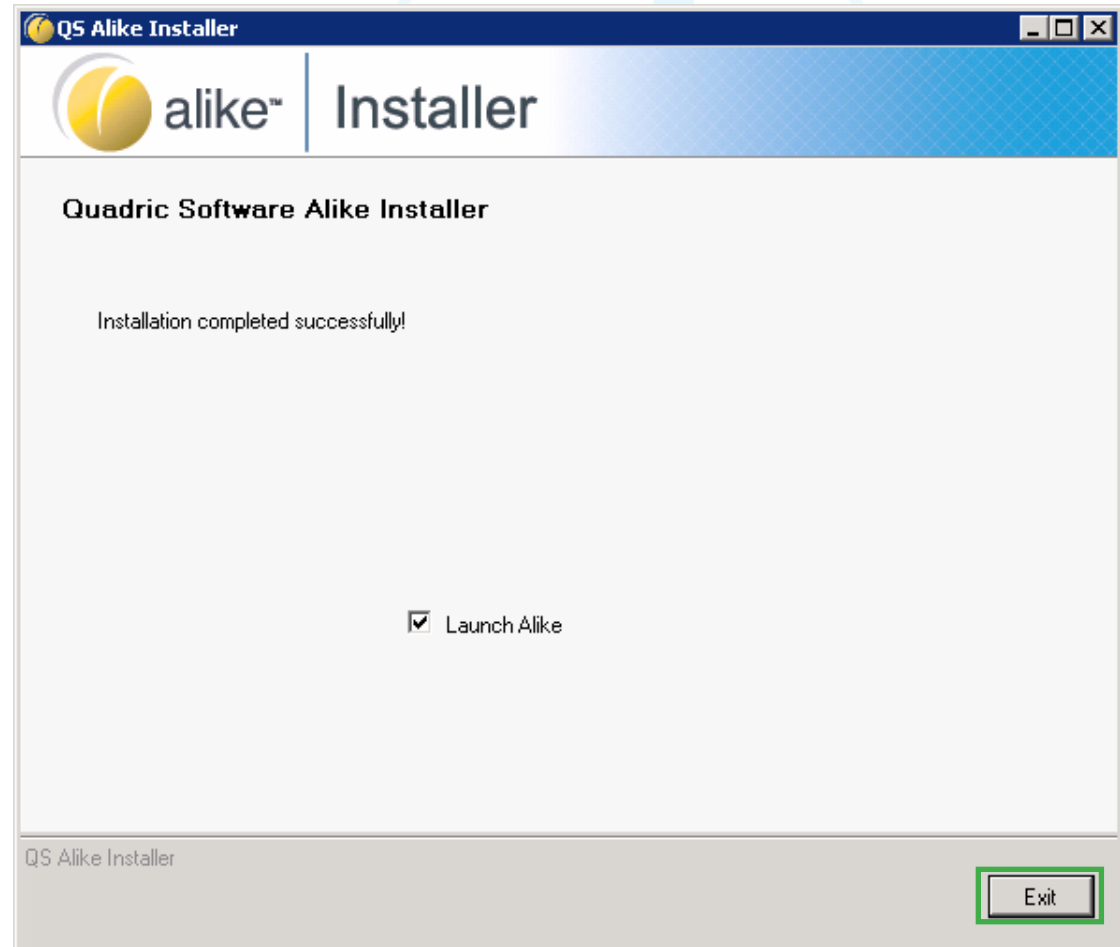


Complete the installation wizard.

Congratulations!


Alike has been successfully installed.

Click Exit to exit the Installer and launch the initial configuration wizard.



Proceed to the initial configuration wizard.

Alike Configuration

 Alike's Configuration Wizard walks you through the following:

- **ADS (Alike Data Store) setup**
Where your backup data is stored.
- **License key validation**
Review license types/quantity.
Additional licenses may be added at this time.
- **Alike console access**
Set up the online connection for the Alike interface.
- **Link hosts/systems to protect**
One license key is required per CPU socket on each host or system protected.

1) Click Next to begin the configuration.



Proceed to the ADS (Alike Data Store) setup.

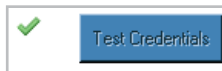
ADS (Alike Data Store) Setup

- 2) Browse or input the desired ADS location.

The ADS location must reside on a CIFS share.
If you select a local path, Alike will create a CIFS share for you automatically.

- 3) Input your access credentials.

- 4) Click Test to authenticate your credentials.
A checkmark appears to confirm authentication:



- 5) Once authenticated, click Next to continue.



The screenshot shows the 'Alike Initial Setup Wizard' window. The title bar says 'Alike Initial Setup Wizard'. The main header has the 'alike' logo and 'Configuration Wizard'. On the left, a 'Configuration Steps' sidebar lists: Welcome, ADS (selected), Local console, Console, Home, and Finished. The main content area has a heading 'The ADS is where Alike stores all of your backup data.' followed by explanatory text: 'Your ADS must be accessible by a network share (CIFS). A remote share will require a username and password validation before proceeding. If you store your backup data locally on this server, Alike will automatically create and configure a network share for you.' Below this is a warning: 'Please ensure the location provided has sufficient space for your backup data.' The form contains three fields: 'ADS Path' with a 'Browse' button, 'Username:', and 'Password:'. A 'Test Credentials' button is on the right. At the bottom, there's a 'Next >' button highlighted with a green box. The footer shows 'Quadric Software Alike Version 4.11 Build 13849' and a 'Support' link.



Proceed to the license key review.

Alike Configuration (continued)

License Key Review

6) Review/edit license key(s), type, and expiration.

If no license key numbers are shown, please wait a few moments. Alike is attempting to activate the key(s) over the Internet.

You may add additional keys at this time by clicking Add New License Keys above the Product Name column.

7) Click Next to continue.

Did You Know?

Alike protects both virtual and physical environments. Our simple licensing model makes it easy to add Alike to virtual-only, physical-only, or blended setups.



Virtual

Protect XenServer and Hyper-V environments (or combination of the two).



Physical

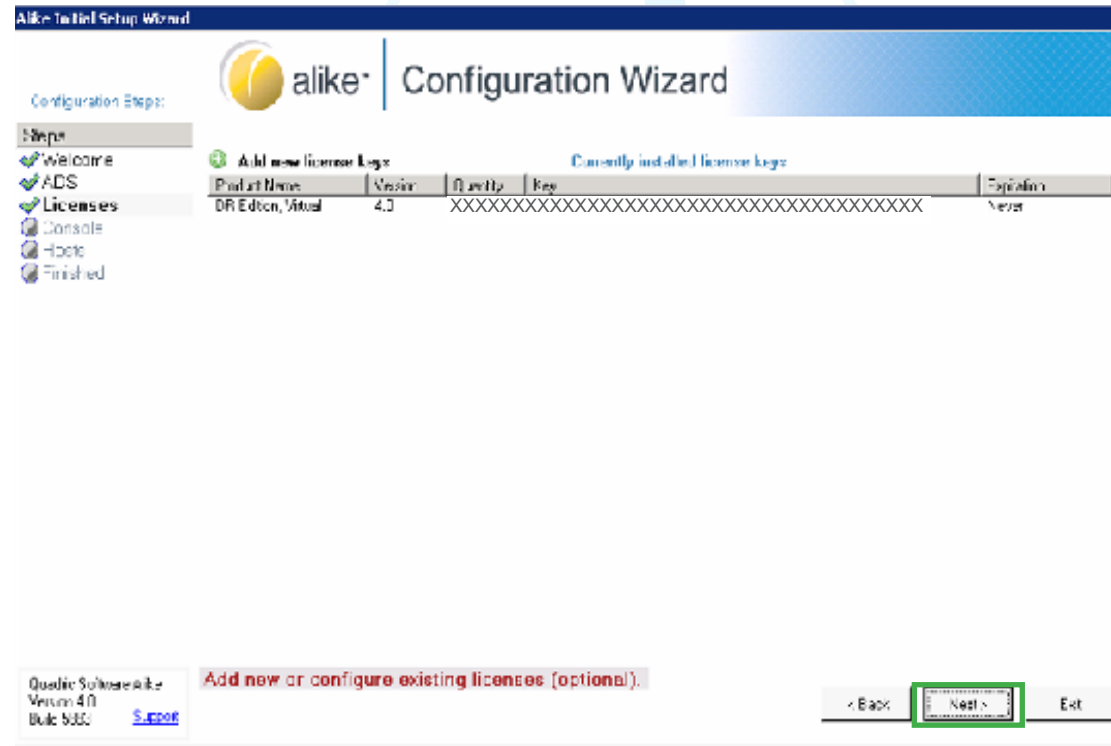
Standalone P2V protection for Windows-based physical servers.



Combine Virtual & Physical

Incorporate data from your physical systems into your virtualized protection planning.

*Editions of Alike Standard and Alike DR cannot be mixed within the same environment.



Proceed to the Alike Admin Console connection setup.

Alike Configuration (continued)

Alike Admin Console Access Setup

Alike's online management console may be accessed locally, or from any system with a supported browser:



- 8) Input the TCP port of your choice.
- 9) Input your desired username and password for console access.
- 10) Click Next to continue.

You may access the Alike Admin Console at: <http://localhost:8080>. You may also remotely access the console by visiting the IP or URL of your Alike install server.



The screenshot shows the 'Alike Initial Setup Wizard' window. The title bar says 'Alike Initial Setup Wizard'. The main header has the 'alike' logo and 'Configuration Wizard'. On the left, a 'Configuration Steps' sidebar lists: Welcome, ADB, Users, Console, Hosts, and Finished. The 'Console' step is currently selected. The main content area has the following text: 'The Admin Console is a web-based application that runs on your Alike Server.', 'The Admin Console can be accessed locally, or from any system using a modern web browser. Please select the TCP port you wish to use.', and 'Please ensure the selected TCP port is open on your local firewall!'. Below this, there is a text box for 'Admin Console TCP Port' with the value '8080'. Another section titled 'Please choose your Admin Console access credentials:' contains 'Username:' and 'Password:' input fields. Below these, it says 'Your Admin Console will be available at: <http://localhost:8080>'. At the bottom, there is a 'Configure your Web Service details' section. The bottom right has navigation buttons: '< Back', 'Next >', and 'Exit'. The bottom left corner of the window shows 'Quadric Software Alike Version 4.0 Build 6893' and a 'Support' link.



Proceed to add your protected host(s)/system(s).

Alike Configuration (continued)

Add Host(s) and System(s) to Protect

On the Hosts page you will add the hosts/systems you want Alike to protect, and allow Alike to enumerate the guest data within.

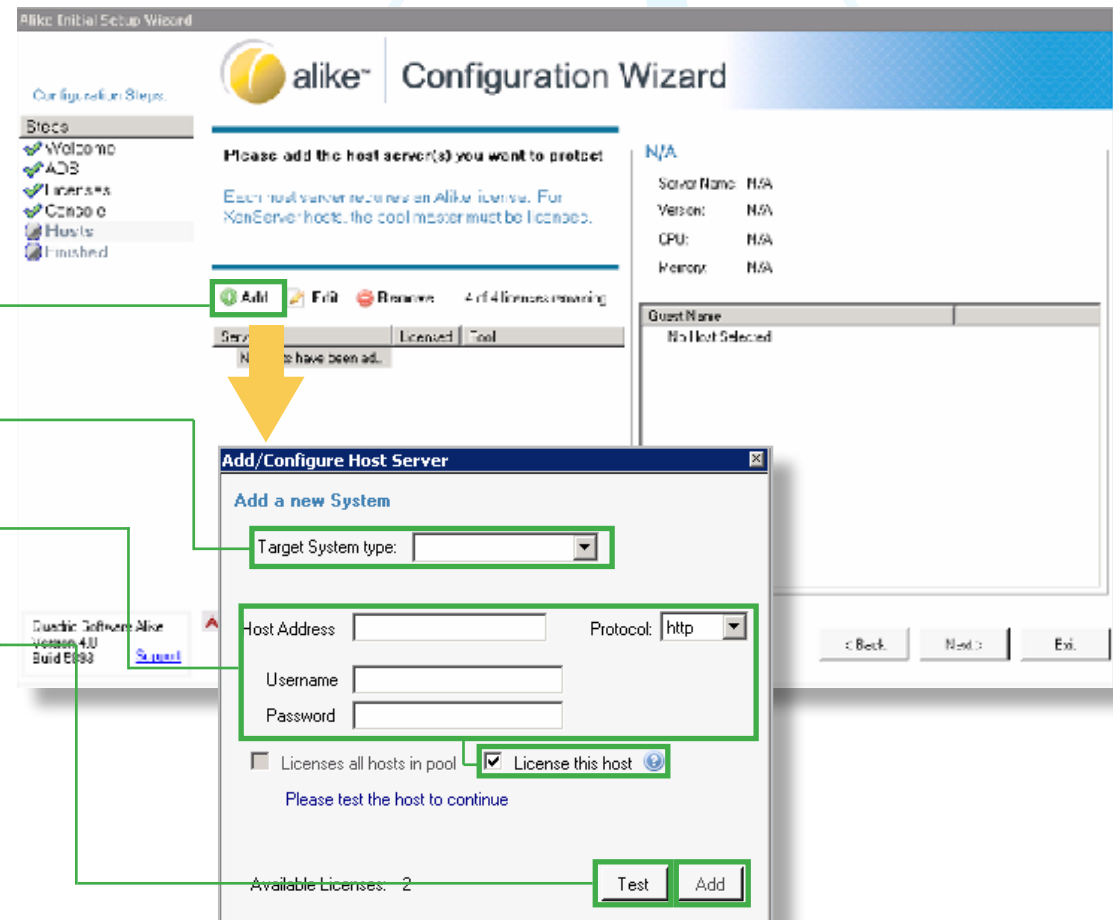
- 11) Click the Add button to open the Add/Configure Host window.
- 12) Select your target system type.
- 13) Input the host address, select the host protocol, and input the username and password.
Ensure License This Host box is checked
- 14) Click Test to authenticate your host credentials. A checkmark appears to confirm authentication:



- 15) Click Add to add the host/system.

Alike will begin to enumerate guest data automatically.

 Connection successful! Enumerating guests...



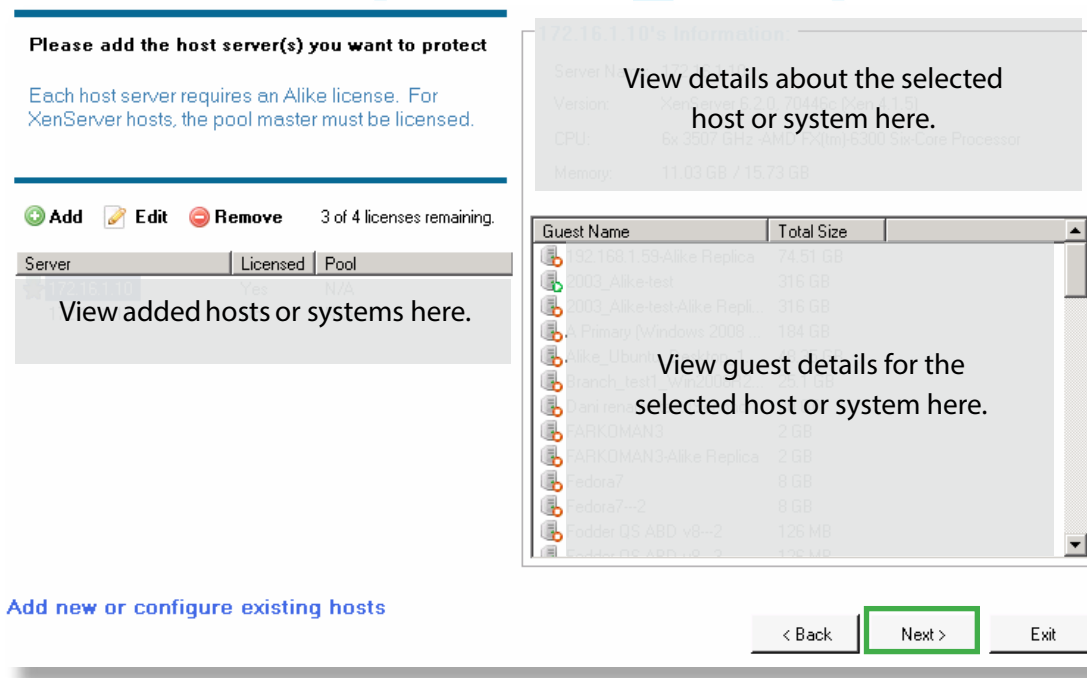
Continue with the host(s)/system(s) addition.

Enumeration times vary depending on the volume of guest data within the added host/system.

If you wish to add more hosts/systems, you may do so at this time. Simply repeat steps 11-15 from the previous page.

Each protected host/system requires an Alike license. Any host without a license cannot be used for backup functions, or as the source for replication jobs. They can, however, be used as targets of replication or restore jobs.

16) After your added hosts/systems have finished enumerating, click Next to the continue.



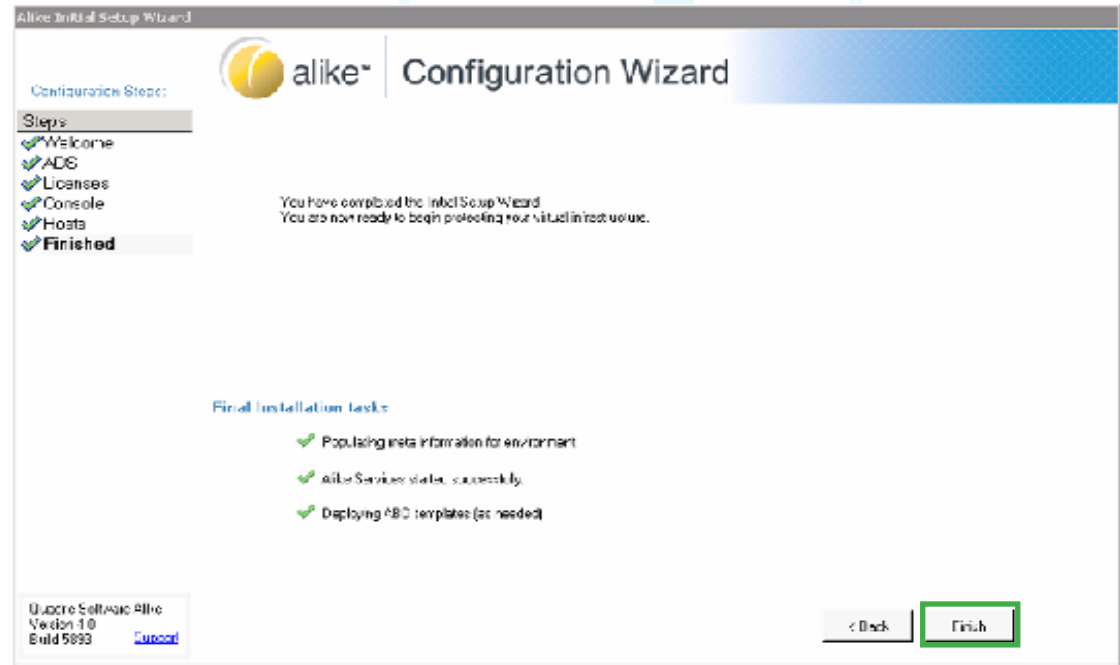
Complete the initial configuration wizard.

Congratulations!

You've completed Alike's initial configuration. Click Finish to initiate the final installation tasks. Alike automatically starts the tasks and confirms completion with green checkmarks.

When done, you're ready to proceed to the online Alike Admin Console.

Please open a browser and visit your specified access URL.



Launch the Alike Admin Console.

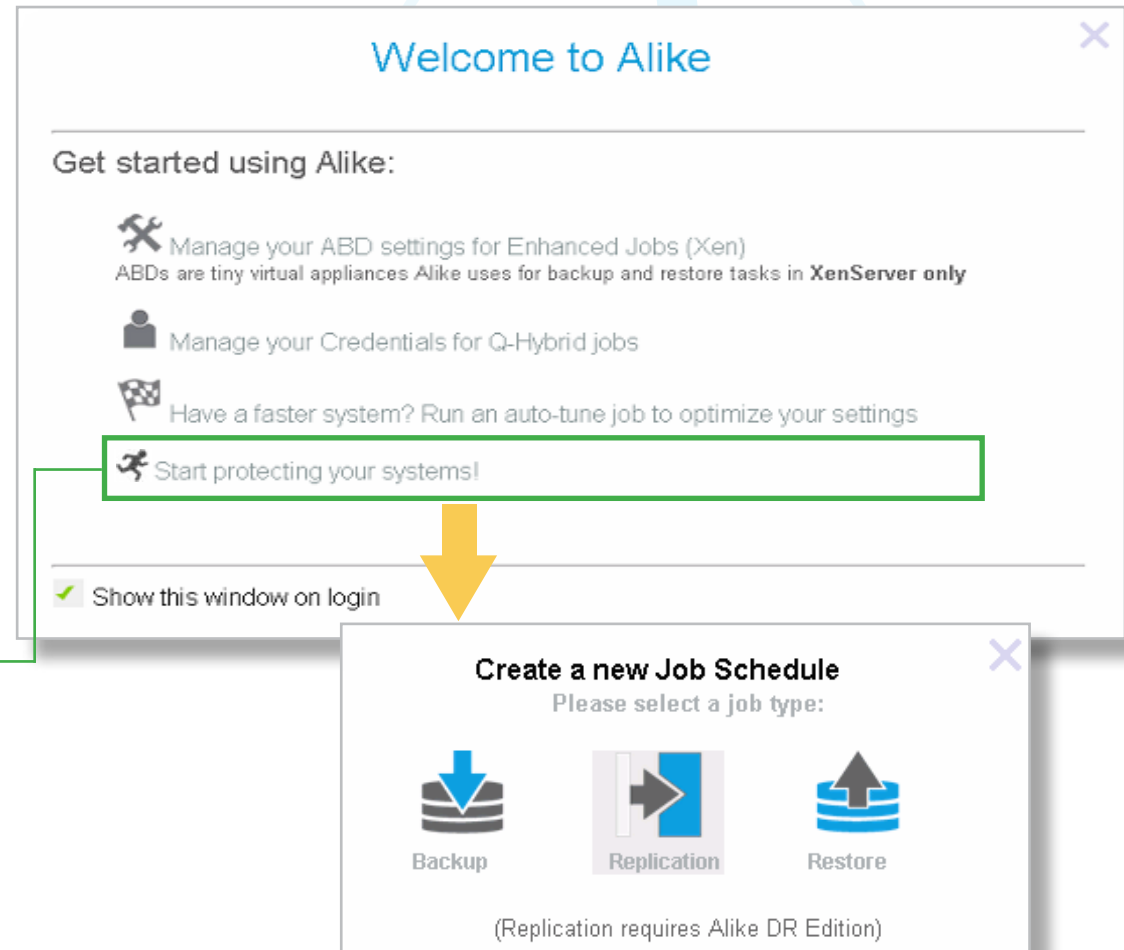
Create Your First Job

Start Protecting.

Upon launch, the Alike Admin Console displays several options for first-time users:

- Further configure your ABD settings. (Xen only)
- Make changes to your service credentials for Q-Hybrid (agent-based) job types.
- Run an auto-tuning job to optimize performance settings on fast systems.

When you're ready to create your first job, click Start protecting your system. This launches the Create a New Job Schedule window. Choose the job type you wish to create.



XenServer users: learn more about ABD (Alike Backup Delegate) templates.

ABD (Alike Backup Delegate) Overview

ABD Overview

If you added a [XenServer](#) host during the initial setup, Alike automatically deploys and configures an ABD (Alike Backup Delegate) template.

ABDs are tiny virtual appliances Alike uses for backup and restore tasks through its Enhanced (agentless) job method which require an IP address to function. By default, Alike assigns the ABD IP using [DHCP](#).

If you prefer to [assign a static IP](#) for your ABD template(s): ●

- 1) Click the menu button.
- 2) Select Add/Edit IPs.
- 3) Select your desired XenServer network.
- 4) Select Manually Assign IP Address(es).
- 5) Input an IP address, netmask, gateway, NAT IP (optional), and click the Add/Update button.
- 6) Click Save to return to the previous window.

The IP cannot be used for any other purposes within your network. One IP is required for each simultaneous job.

Alike dynamically assigns the IPs you provide to the ABDs, when in use. Add more IPs to allow additional simultaneous Enhanced jobs.

The IP(s) must be able to route/connect to your ADS, and reachable by the Alike Server.

Manage your ABDs

Xen Pool (or standalone)	ABD State	ABD Version	IP Address(es)
QS Xen test Lab	Installed	ABD_8_0_5074	DHCP

ABDs are used by Alike to perform various backup and restore tasks for the **XenServer platform only**. Alike requires only 1 ABD template per Xen Pool.

You may add more IP address to allow for concurrent Enhanced jobs

- Redeploy ABD Template
- Delete ABD Template
- Run ABD Diag Job
- Add/Edit IPs

Manage IPs for ABD

Xen Network:

☐ Use DHCP

☐ Manually assign IP Address(es)

IP Address	Xen Network	MAC
(Add Another IP)		

IP Address: Netmask:

Gateway: NAT IP: (optional)

Add/Update

Alike will dynamically assign the IPs you provide above to the ABDs, when in use. Add more IPs to allow additional simultaneous Enhanced jobs. [Learn more about ABDs](#)

Note: The IPs you provide must be able to route/connect to your ADS, and the Alike server must be able to reach it.

SAVE **CLOSE**

Get to know the Alike Admin Console navigation bar:



Dashboard

View your storage status, job activities, job performance history, and Alike notifications. You may return to the dashboard at any time by clicking here.

Jobs

View and edit your current, past, and scheduled jobs. Create and schedule new backup, replication, and restore jobs as well.

Systems

Access/review information about your protected systems. View a history of your backup jobs. Make changes to your managed hosts.

Tools





Review and update your licensing, ABD (Alike Backup Delegate) templates, and general Alike settings. View and export system logs, too.

Help


Connect to Alike product documentation, our online knowledge base library, and our Support team.

Navigation Bar Icons


Alike Service Status

-  Indicates Alike services are starting.
-  Indicates all Alike services are running.
-  Indicates all Alike services are offline.
-  Indicates the Alike services are disconnected.


Active Job(s) Indicator

-  Animates when jobs are running.
Click to view active job details.

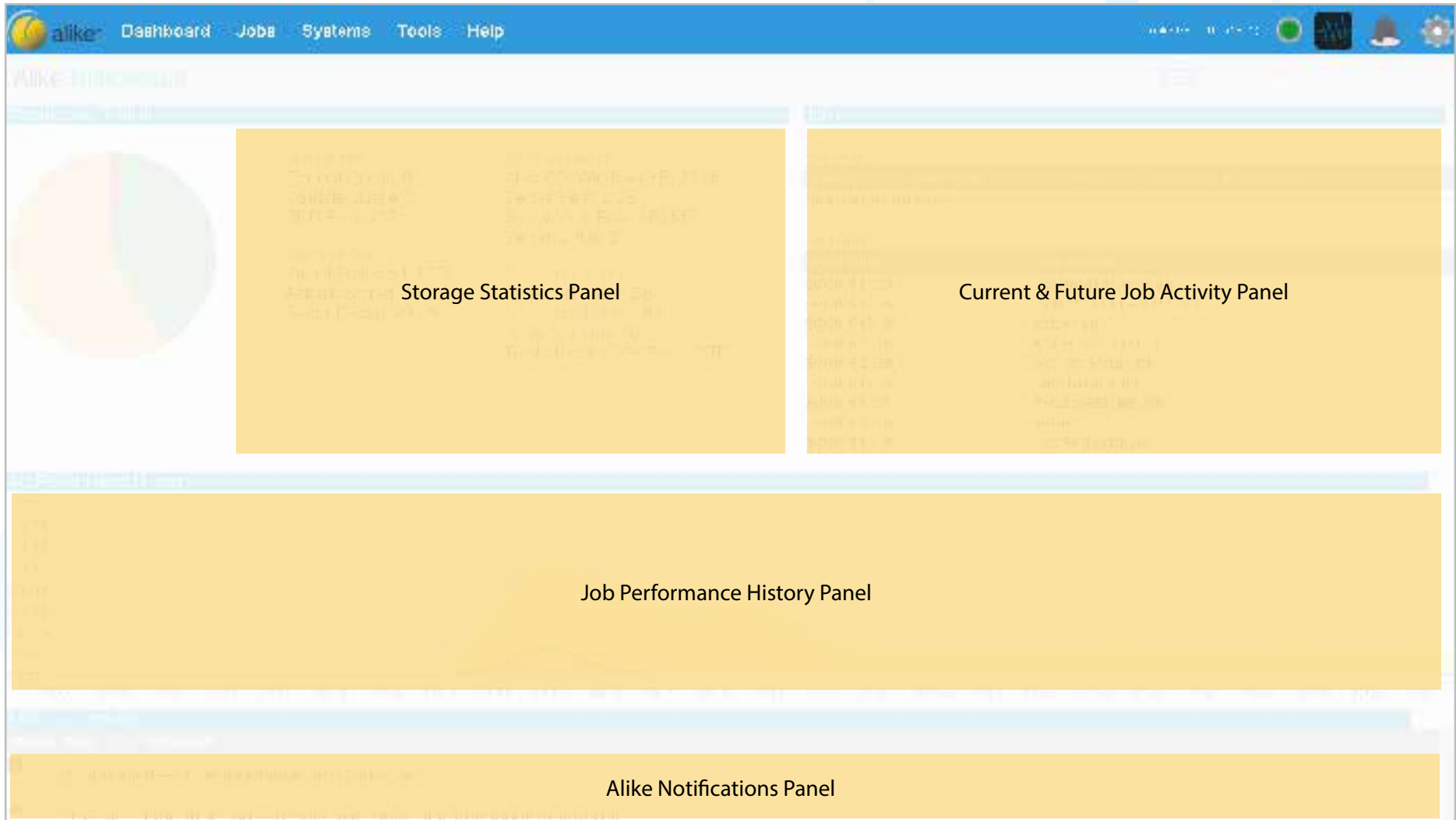
Alerts Center

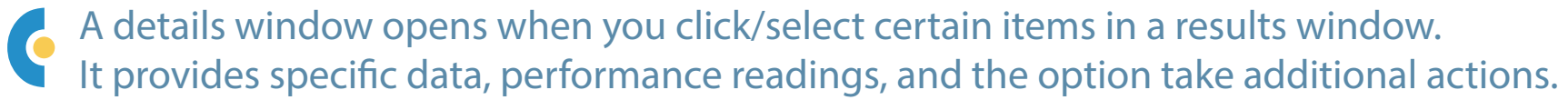
-  Click to view system alerts. The number of alerts awaiting will review appear over the icon.

Alike Settings

-  Logout of Alike, change web session settings, and change general Alike settings.

- The Admin Console dashboard keeps you informed about the status and activity:



[illegible]

TypeSystem Name

</



Thank you for your interest in Alike!

If you have any questions about the product,
please contact our Sales team:

[sales@quadricsoftware.com
(800)688.8769 | +1(802).536.4623]